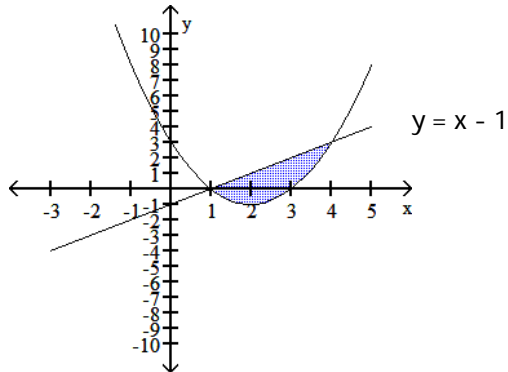


Find the area of the shaded region.

1)  $y = x^2 - 4x + 3$

1) \_\_\_\_\_



Find the area enclosed by the given curves.

2)  $y = x$ ,  $y = x^2$

2) \_\_\_\_\_

3) Find the area of the region in the first quadrant bounded by the line  $y = 8x$ , the line  $x = 1$ , the curve  $y = \frac{1}{\sqrt{x}}$ , and the  $x$ -axis.

3) \_\_\_\_\_

4) Find the area of the region in the first quadrant bounded on the left by the  $y$ -axis, below by the line  $y = \frac{1}{3}x$ , above left by  $y = x + 4$ , and above right by  $y = -x^2 + 10$ .

4) \_\_\_\_\_

---

Answers:    1)  $19/2$     2)  $1/6$     3)  $5/4$     4)  $73/6$